



Amendment #1 to the Sailing Instructions

For Course B and Course C

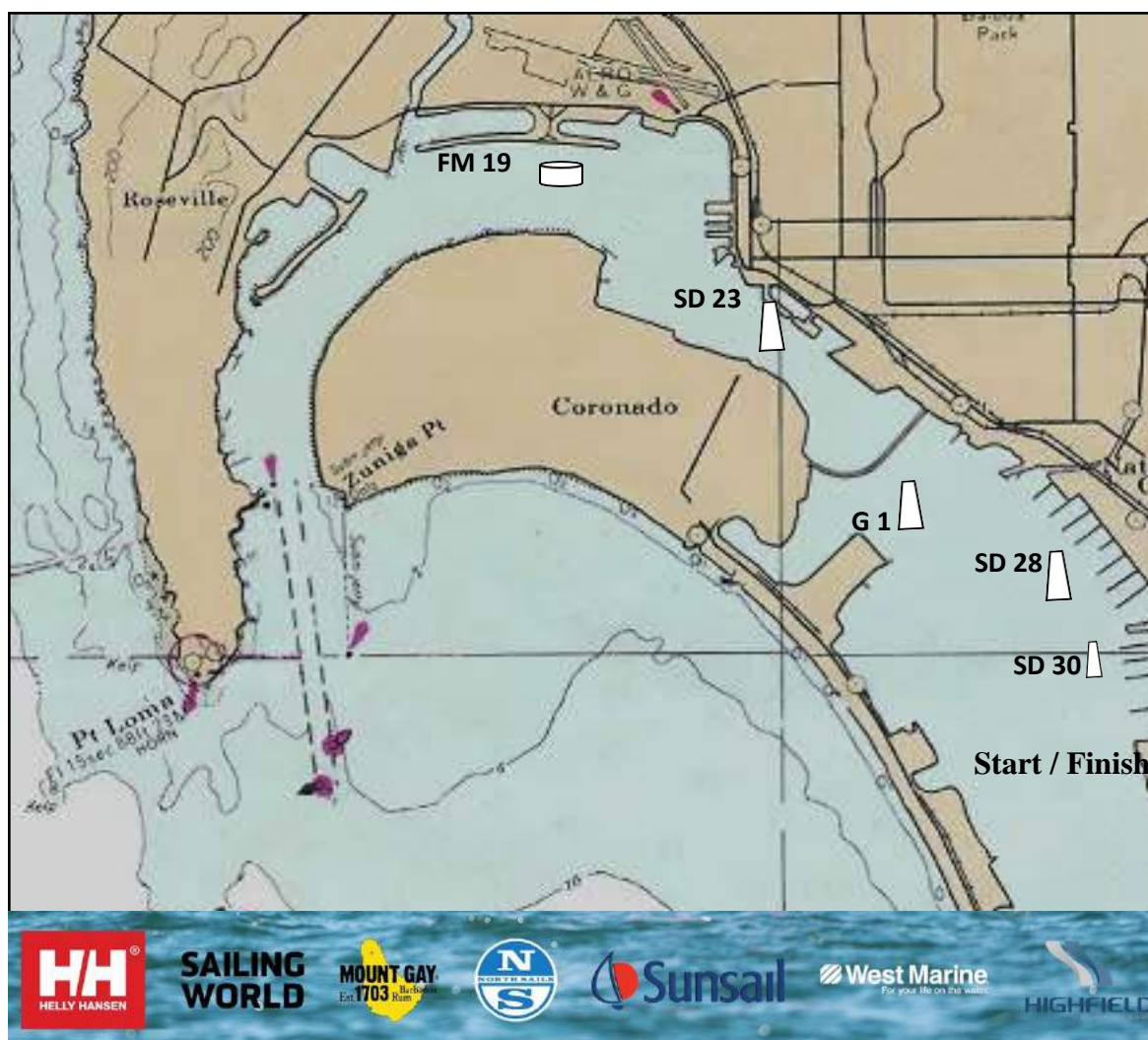
Add the following courses:

Course #7 – (seven legs) This course is a windward, leeward three times around, finish upwind. The marks shall be rounded to port in the order of 1, 2, 1, 2, 1, 2, Finish and will be signaled by numeral placard 7.

Course #1 - Start, 1 (windward), 2 (leeward), FM 19 to port, (8'+ white steel mooring buoy located near the east end of Harbor Island), SD "23" to port (located near the entrance to the Marriot Marina), FM 19 to port, finish (at RC signal boat near leeward Mark 2). Approximately 14 miles.

Course #9 – Start, 1 (windward), 2 (leeward), FM 19 to port, (8'+ white steel mooring buoy located near the east end of Harbor Island), finish (at RC signal boat near leeward Mark 2). Approximately 10 miles.

Race Committee – March 14, 2019



**SAILING
WORLD**

MOUNT GAY
Est. 1703



Sunsail

West Marine
For your life on the water

